

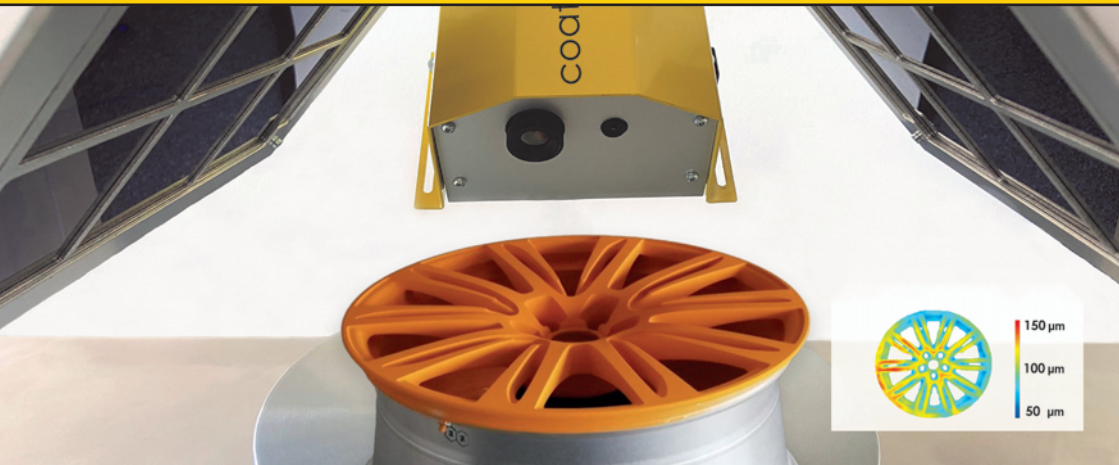


coatmaster

measure up. contactless.

coatmaster 3D Modular

Non-contact coating thickness distribution of large objects



Decrease setup time for your process.

Immediately find and correct uneven coating thickness distribution.



Save material.

Reduce your material consumption by up to 30%. This saves money and protects the environment.



Document continuously.

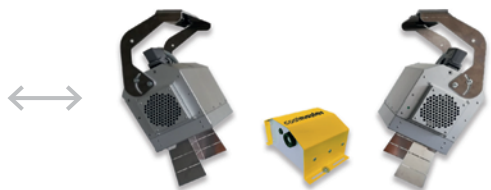
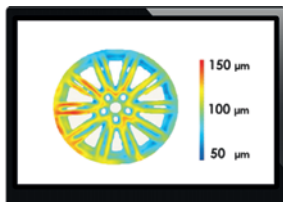
Document your coating process for you and your customers.

Technical data

Substrate: Metal

Powder coatings before curing	30 – 300 μm
Wet coatings before drying	20 – 300 μm
Cured powder coatings	30 – 500 μm
Dried wet coatings	30 – 500 μm
Measuring time	typ. 200 ms
Distance tolerance	10 – 120 cm
Tilt tolerance	$\pm 70^\circ$
Measurement on moving and jiggling parts	yes
Relative standard deviation*	<5 %
Measuring area	scalable up to 2 m ²
Number of measuring point	up to 640 x 512
Works on all colors (incl. white)	yes
Real-time data access via ERP and Internet browser	yes
Dimensions Measuring Head Modular HxWxD	104 x 173 x 141 mm
Weight Measuring head Modular	1.5 kg

All specifications apply to a typical coating system and substrate.
The exact limits always depend on the physical properties of the coating material.
*60 μm powder coating before curing on aluminium, 5 cm working distance.



coatmaster AG

Flugplatzstrasse 5
CH-8404 Winterthur
Tel +41 52 212 02 77
info@coatmaster.com
www.coatmaster.com



Learn more

All information about
thickness measurement
with coatmaster